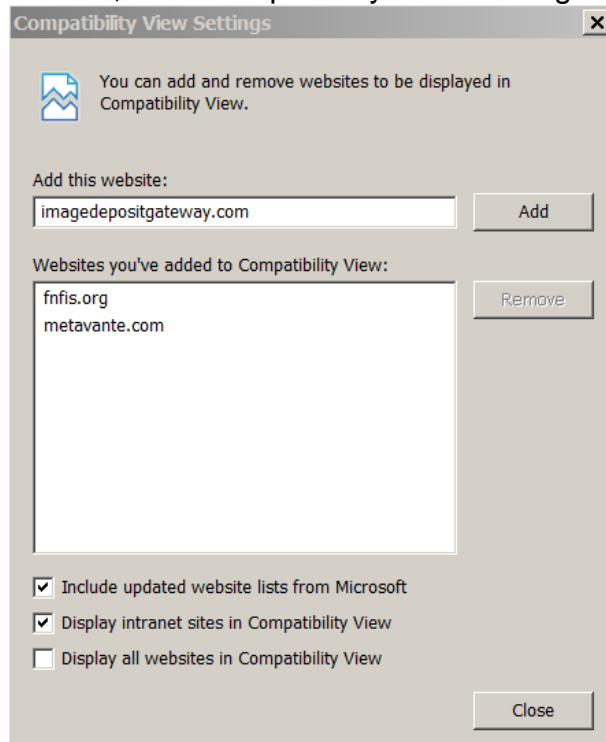


Internet Explorer 11 Settings for Web Client.

Summary of Changes being performed:

Change Compatibility View

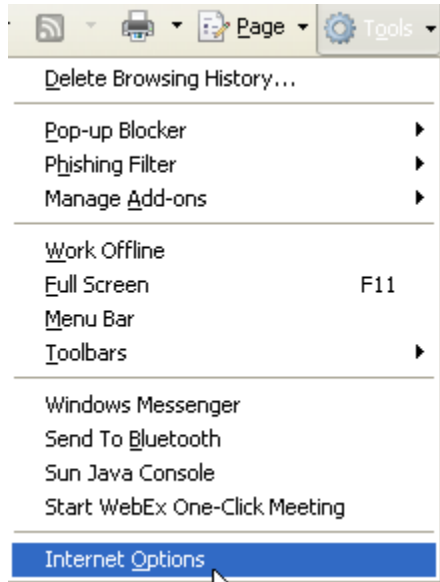
1. Click on Tools, then Compatibility View Settings



2. Click Add and the web address will move down to the Websites box
3. Click Close
4. If the page does not refresh, close the tab and then reopen.

Internet Explorer 11 Settings

1. Adding the site to the Trusted sites zone
2. Change the Security settings for the Trusted Sites.
 1. To add the site to the Trusted Sites list.
 - a. Click on Tools then Internet Options.

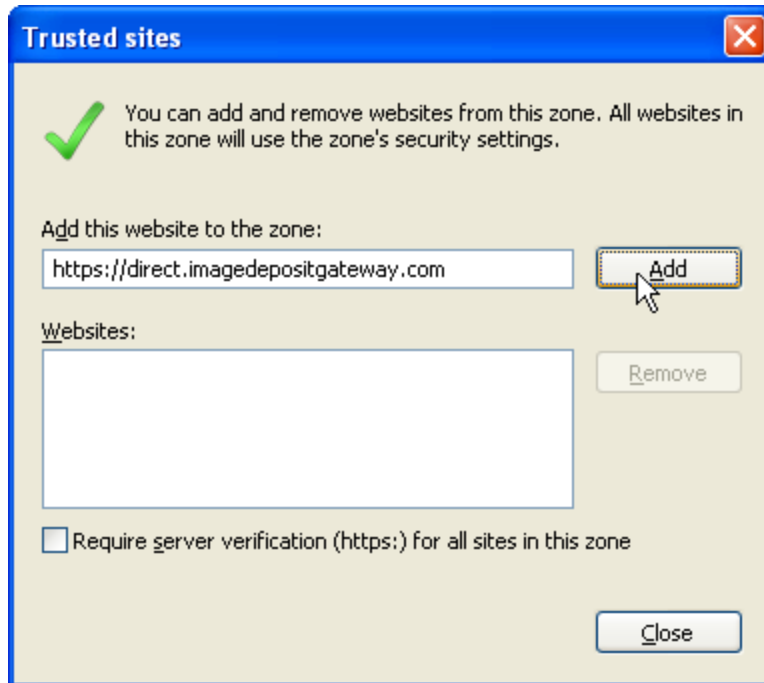


- b.
- c. Click on the **Security tab**.



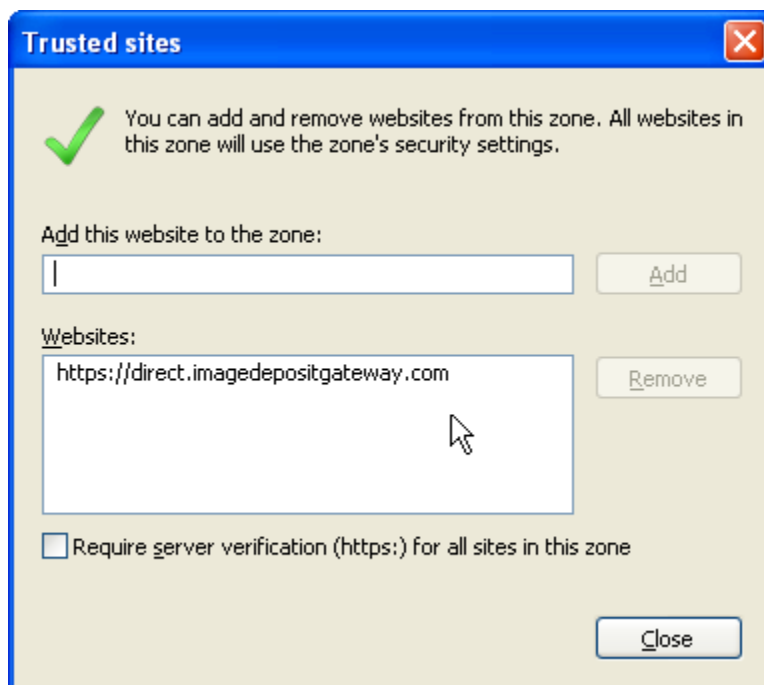
d.

- e. Select (click on) the **Trusted Sites** Zone
- f. Click on the **Sites** box.



g.

- h. If the website <https://direct.imagedepositgateway.com> is not already in the Websites box, click on **Add** button to put the site on the list. If it is already in the Websites box, you do not need to do anything, just click Close.



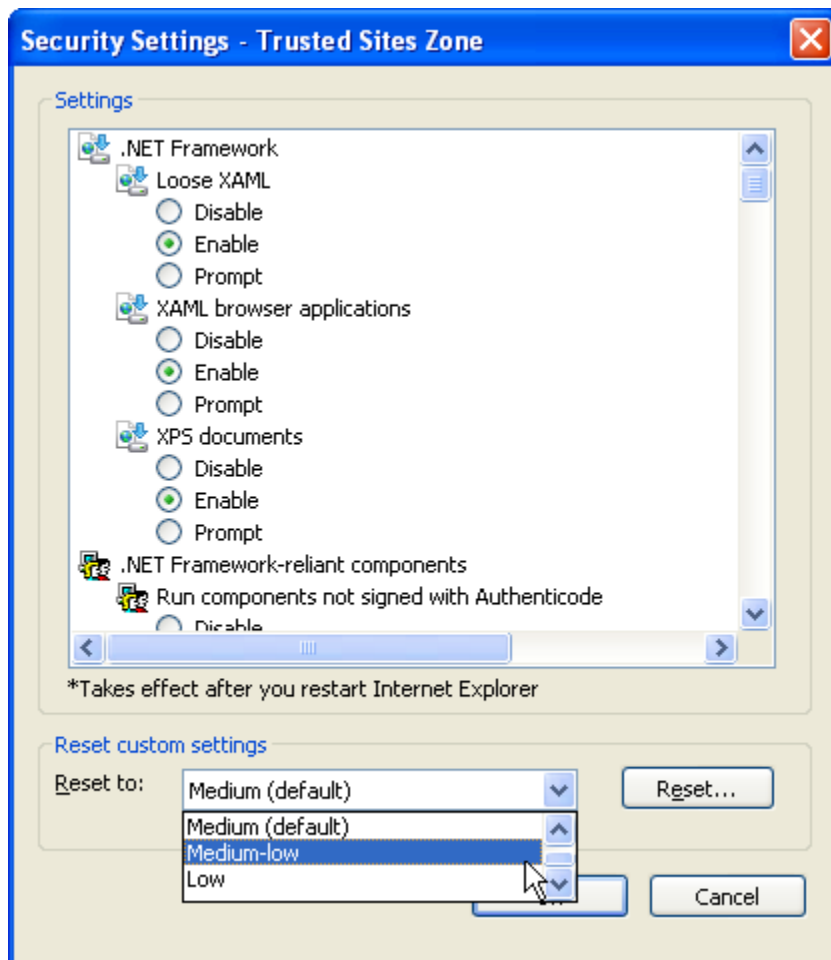
i.

j. Click **Close** to return to the Security Tab.

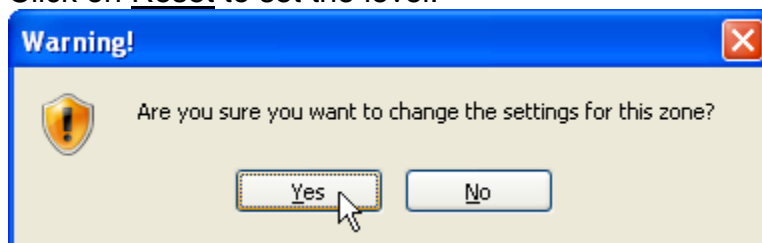
2. Set Security for the Trusted Sites Zone.



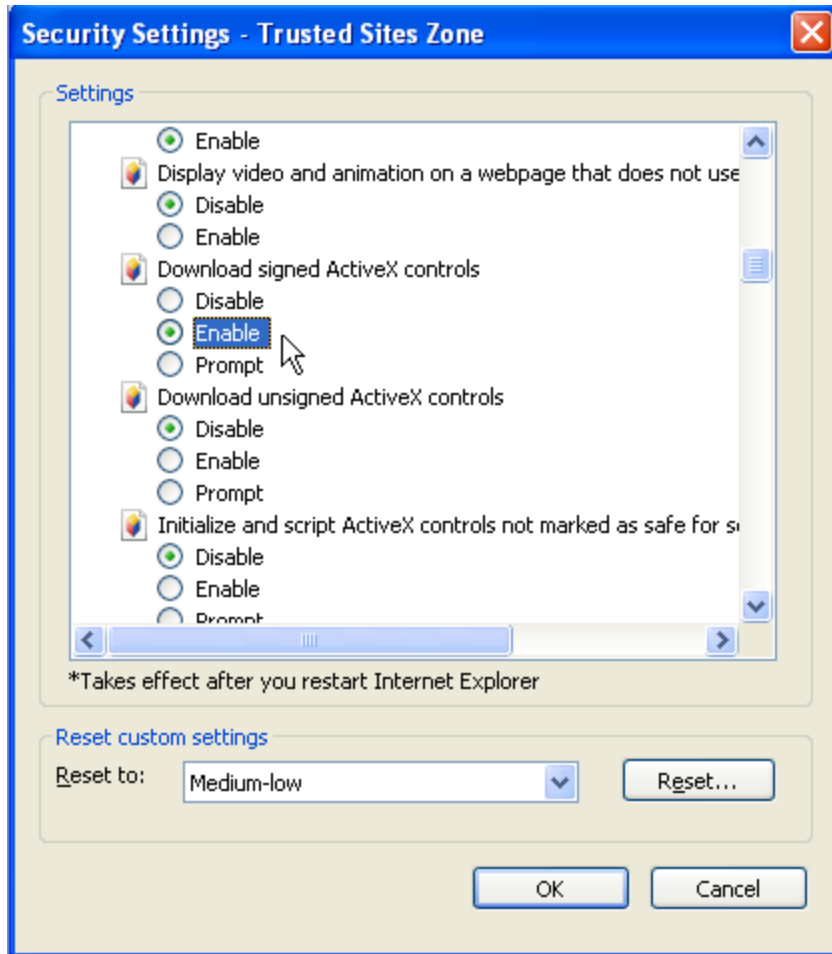
- a.
- b. Click on **Custom Level**
- c. Set the **Reset To:** drop down list to **Medium-low**



- d.
- e. Click on Reset to set the level.



- f.
- g. Click YES that you want to change the settings for this zone.
- h. Scroll down to **Download signed ActiveX controls:**
- i. Click **ENABLE**

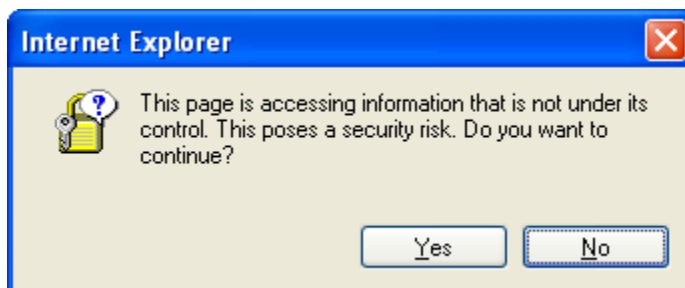


j.

k. Scroll down to the **Miscellaneous** settings.

l. Scroll down to **Access data sources across domains** (this stops the prompting when you making a deposit)

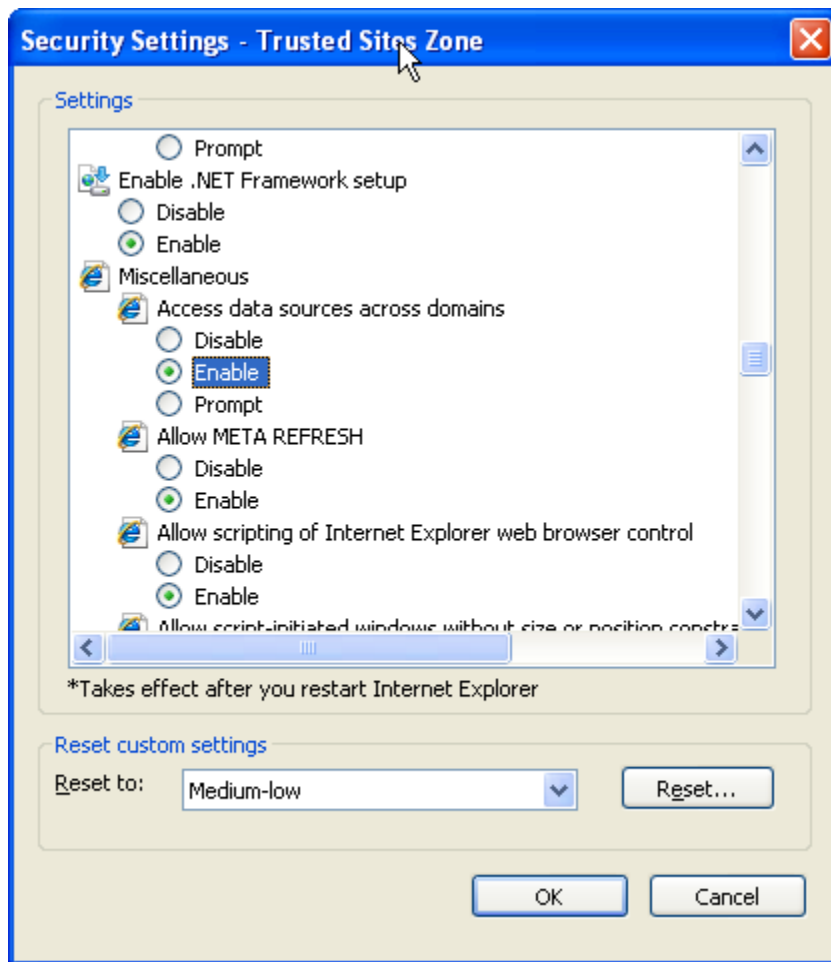
m. Set to **ENABLE**



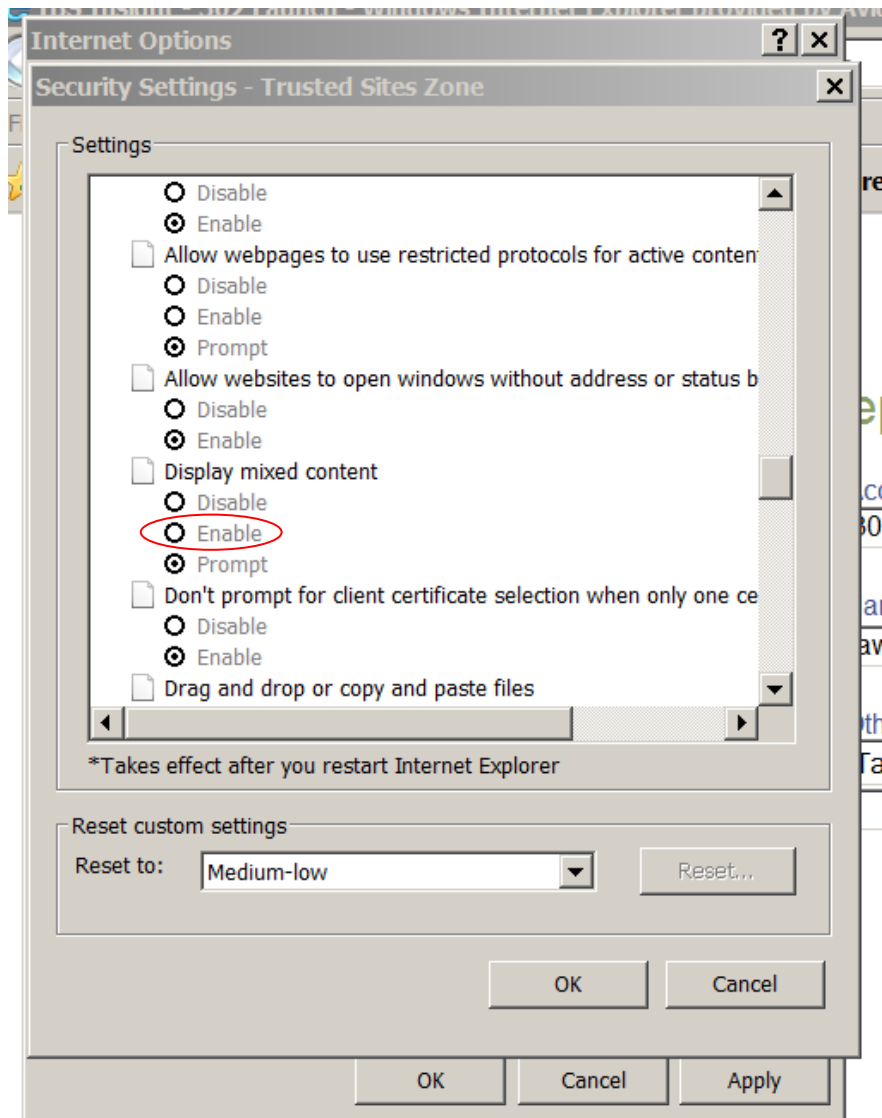
n.

prompting if not enabled)

(Example of

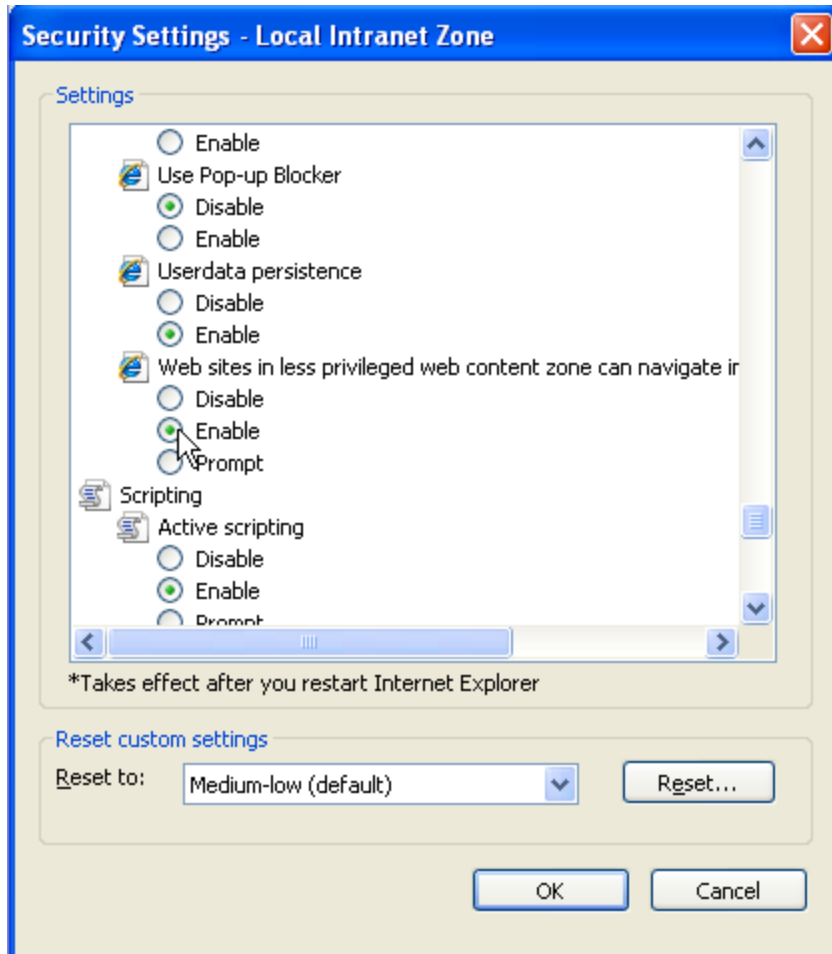


- o.
- p. In the same Miscellaneous section, scroll to Display Mixed Content and click Enable

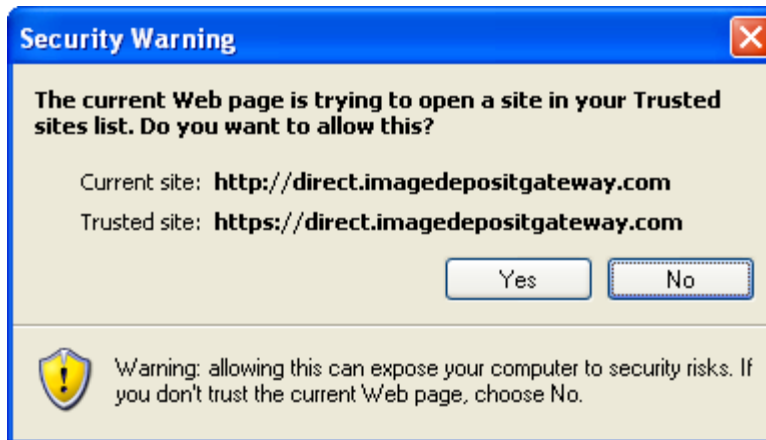


q.

- r. Scroll down to **Web sites in less privileged web content zone can navigate in**

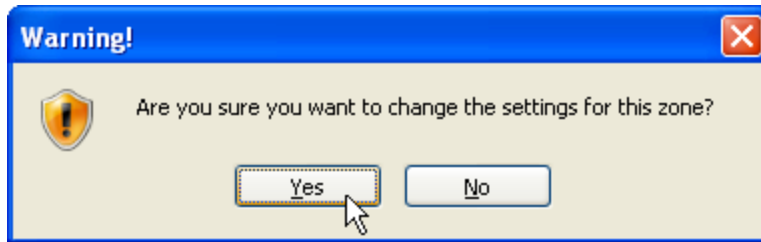


- s.
- t. Set to **ENABLE**



- u. (Example of prompting if not enabled)

- v. Click **OK (not Reset)**.
- w. Click **YES** that you want to change the settings for this zone



x.



y.

z. Click **OK** to finalize the settings and exit

3. **Close all the browsers (not just the tabs)**

4. Launch internet explorer and log in.